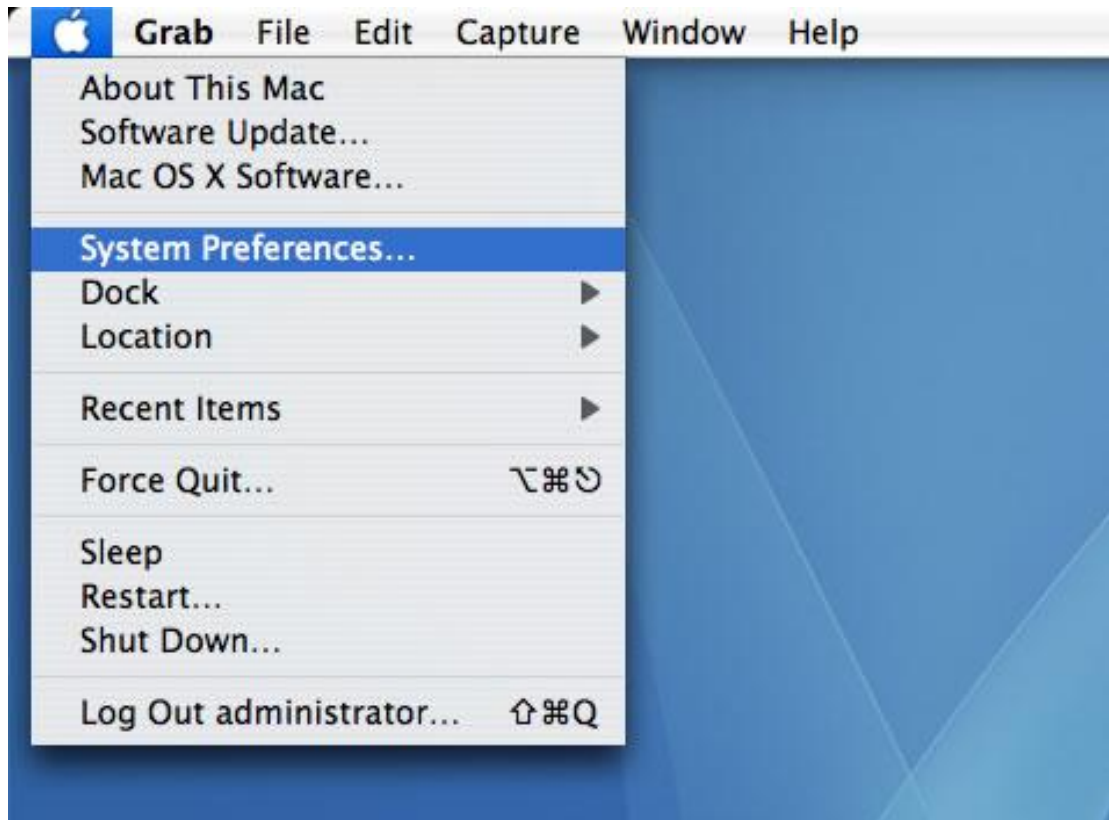


## Apple Mac Setup Guide

### Step 1: (Image 1)

Click on **Apple** icon on Top Left of Screen.  
Click **System Preferences**



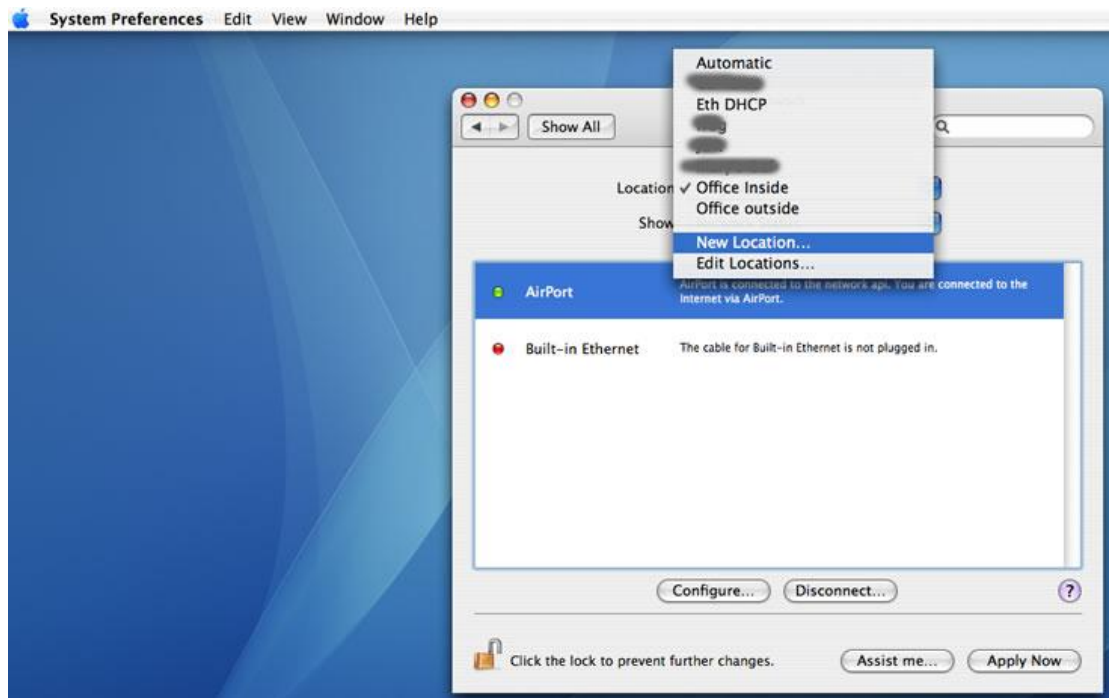
### Step 2: (Image 2)

Click on "Network" in Internet & Network



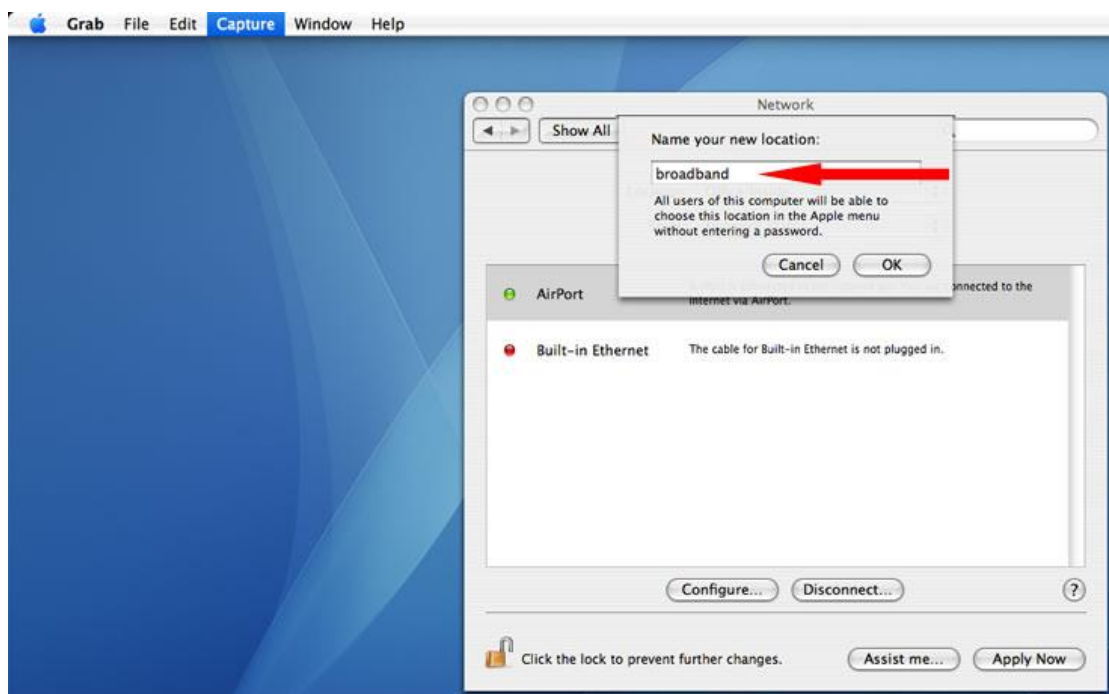
### **Step 3: (Image 3)**

Click on "Location" and then Select "New Location"



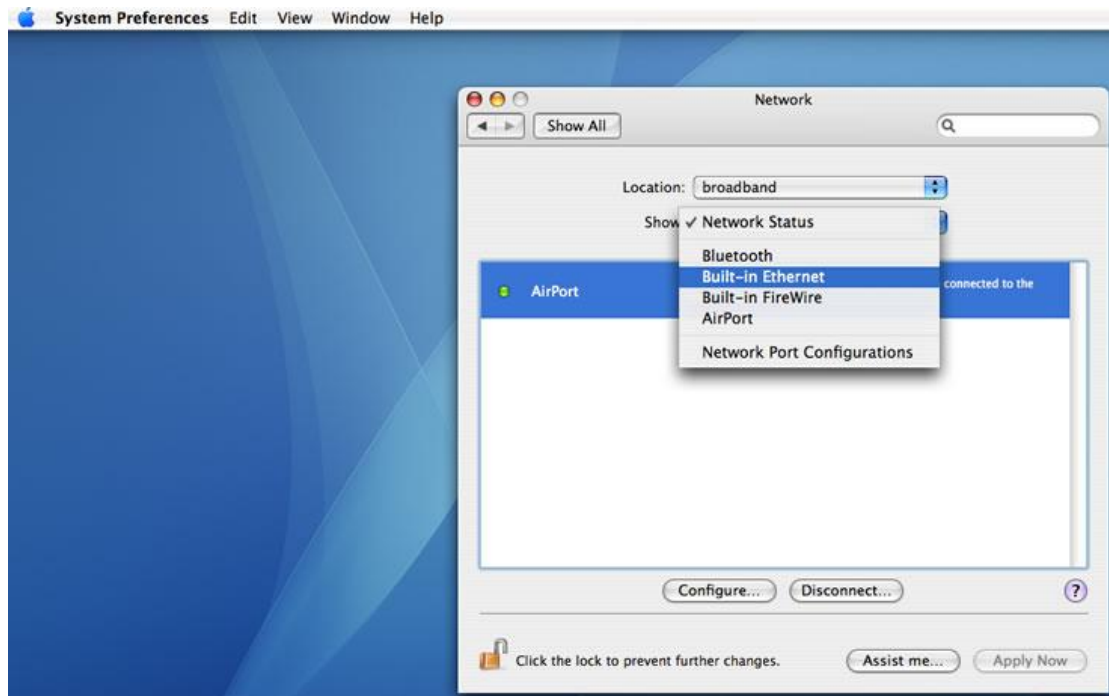
### **Step 4: (Image 4)**

Give you connection a name – e.g. "broadband". Type the name in box as indicated by the red arrow on image below. Then Click the **OK** button.



## **Step 5: (Image 5)**

Select and Click "Show Built-in Ethernet."



## **Step 6: (Image 6)**

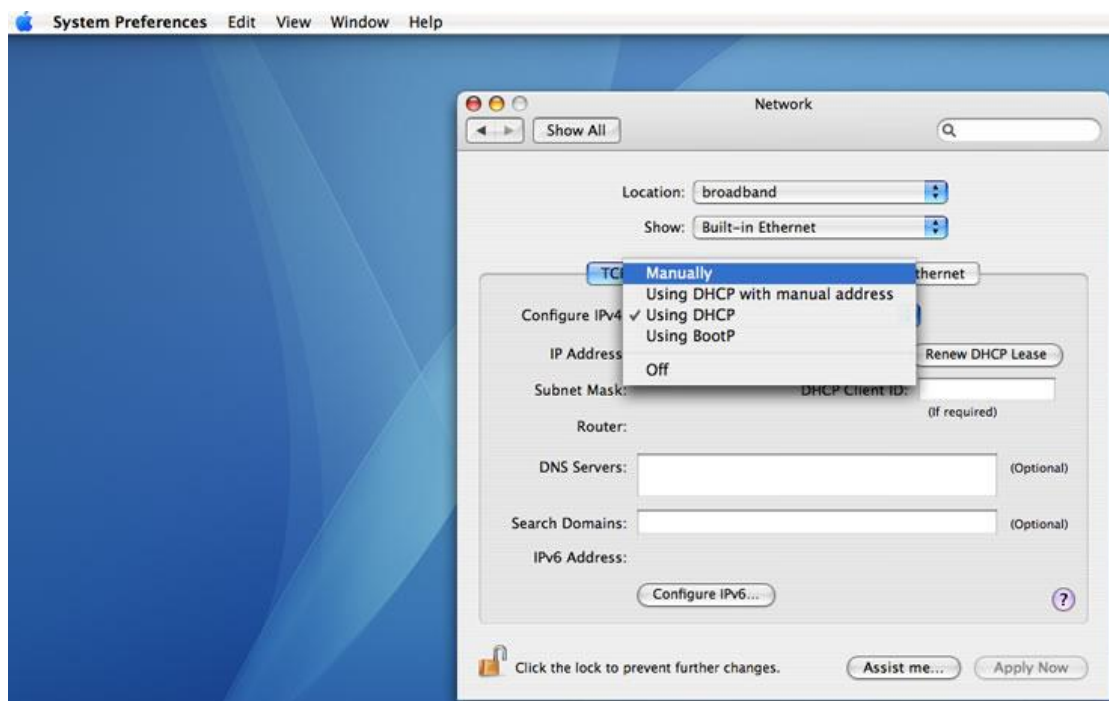
Select TCP/IP Tab

### **If Using a Router (Wireless) :**

1. Select (Tick) – Using DHCP
2. Then Click the **“Apply Now”** button.
3. Now Click the Red **X** on the Top Left Corner.

### **If Computer wired directly to you Antenna**

Select – Configure IPv 4 and Select “Manually”



## **Step 7: (Image 7)**

### **IP Entry (Settings given to you by the Installer)**

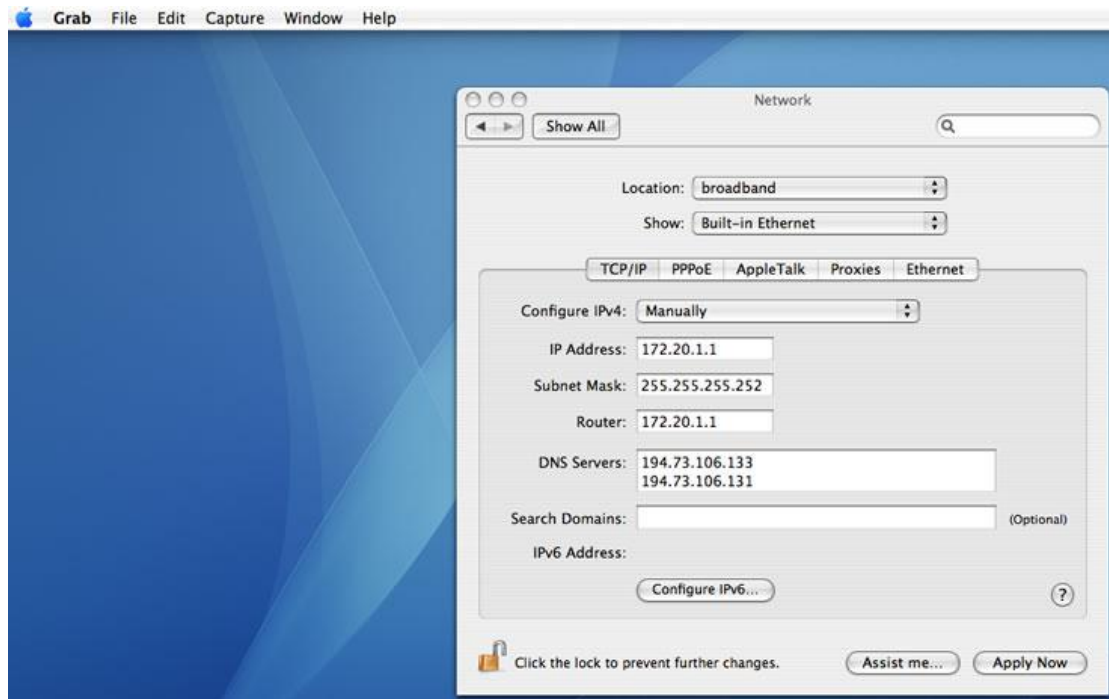
**IP Address:** 172.20. \_\_\_\_ . \_\_\_\_

**Subnet Mask:** 255.255.255.252

**Router:** 172.20. \_\_\_\_ . \_\_\_\_

**DNS Servers:** 194.73.106.133 *then Press Enter*  
194.73.106.131

Then Click the **“Apply Now”** button.



Now Click the Red **X** on the Top Left Corner.

Open the Applications folder and launch the web browser called safari. You should now be able to surf the web.

### **Use Ping on MAC**

Go to your **Applications** Folder

Next **Utilities** Folder

Then Click on Terminal

Type the Command – ping 172.20.?.?