

This guide shows you how to program a router

Step 1. Plug in the router and connect to PC only – one lead should be connected to 1 to 4 ports at the back of the router which is a PC connector.

Step 2. Go to Start, then Control Panel on computer. Look for Network Connections and Double click on it. Then Right Click on 'Local Area Connection' and Enable.

Step 3. Open up Internet Explorer – in the address bar - for the Linksys router type <http://192.168.1.1> and press Enter.

Note: Check router documentation for other model's default ip address

Step 4. You will be asked for a username and password, for the Linksys router leave username 'blank' and type in the password – **admin**.

Note: For other branded routers the reader should check the documentation for the correct default username, and password for their respective model.

The screenshot displays the Linksys router's web-based configuration interface. The main navigation bar includes 'Setup', 'Wireless', 'Security', 'Access Restrictions', 'Applications & Gaming', 'Administration', and 'Status'. The 'Setup' section is further divided into 'Basic Setup', 'DNS', 'MAC Address Clone', and 'Advanced Routing'. The 'Internet Setup' section is active, showing 'Internet Connection Type' set to 'Static IP'. The 'Optional Settings (required by some ISPs)' section includes fields for Router Name (WRT54GS), Host Name, Domain Name, MTU (Auto), and Size (1500). The 'Network Setup' section shows 'Router IP' with Local IP Address (192.168.1.1) and Subnet Mask (255.255.255.0). The 'Network Address Server Settings (DHCP)' section has 'DHCP Server' checked as 'Enable', with a Starting IP Address of 192.168.1.100, Maximum Number of DHCP Users of 50, Client Lease Time of 0 minutes, and WNS of 0.0.0.0. The 'Time Setting' section shows 'Time Zone' set to '(GMT) England' and 'Automatically adjust clock for daylight saving changes' checked. A right-hand sidebar provides explanatory text for various settings. At the bottom, there are 'Save Settings' and 'Cancel Changes' buttons, and the Cisco Systems logo.

Setup

Setup | Wireless | Security | Access Restrictions | Applications & Gaming | Administration | Status

Basic Setup | DNS | MAC Address Clone | Advanced Routing

Internet Setup

Internet Connection Type

Static IP

Internet IP Address: [xxx] [xxx] [xxx] [xxx]

Subnet Mask: [255] [255] [255] [252]

Gateway: [xxx] [xxx] [xxx] [xxx]

Static DNS 1: [194] [73] [106] [133]

Static DNS 2: [194] [74] [65] [68]

Static DNS 3: [0] [0] [0] [0]

Optional Settings (required by some ISPs)

Router Name: [WRT54GS]

Host Name: []

Domain Name: []

MTU: [Auto]

Size: [1500]

Network Setup

Router IP

Local IP Address: [192] [168] [1] [1]

Subnet Mask: [255] [255] [255] [0]

Network Address Server Settings (DHCP)

DHCP Server: Enable Disable

Starting IP Address: [192.168.1] [100]

Maximum Number of DHCP Users: [50]

Client Lease Time: [0] minutes (0 means one day)

WNS: [0] [0] [0] [0]

Time Setting

Time Zone: [(GMT) England]

Automatically adjust clock for daylight saving changes

Static IP: This setting is most commonly used by Business class ISP.

Internet IP Address: Enter the IP address provided by your ISP.

Subnet Mask: Enter your subnet mask. More...

Host Name: Enter the host name provided by your ISP.

Domain Name: Enter the domain name provided by your ISP. More...

Local IP Address: This is the address of the router.

Subnet Mask: This is the subnet mask of the router.

DHCP Server: Allows the router to manage your IP addresses.

Starting IP Address: The address you would like to start with. More...

Time Setting: Choose the time zone you are in. The router can also adjust automatically for daylight savings time.

Save Settings | Cancel Changes

CISCO SYSTEMS

NWE – Blue Box Broadband

Step 5. Your installer will have given you the settings for your router.

Note: For any computer accessing the Internet via the router make sure the respective connections are set to **Obtain their IP Address Automatically** and also set the **DNS to Obtain Automatically**.

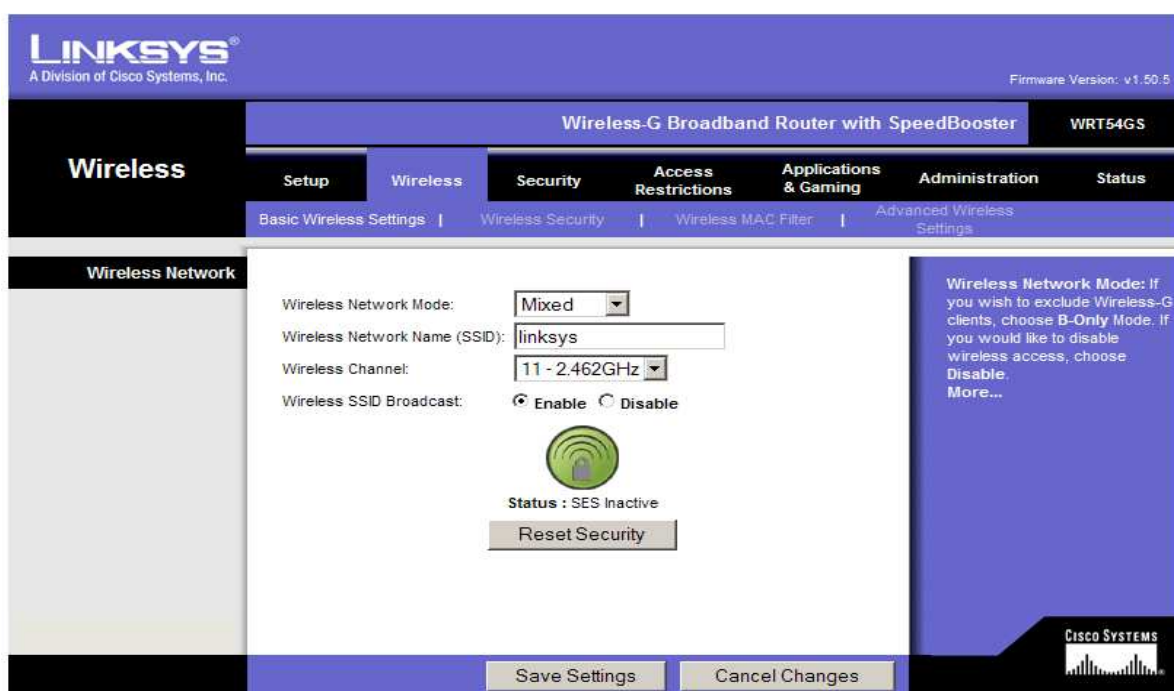
See Page 4 – for Instructions

Step 6. Click into **Wireless**.

Step 7. Change the Wireless Network Mode to **Mixed**

Step 8. Your Wireless name e.g. **Customer Name** or leave it as **Linksys**

Step 9. Leave Wireless Channel as **Enable**



Step 10. Click on **Save Settings** button. This takes you to a page with a **Continue** button on it – Click **Continue** and you go back to the first page

Step 11. Click into **Wireless Security**

Step 12. Open up WordPad / Notepad (Go to Start, Programs and Accessories then click on WordPad/Note Pad for Customer Information to be added), minimize it.

NWE – Blue Box Broadband

LINKSYS
A Division of Cisco Systems, Inc. Firmware Version: v1.50.5

Wireless-G Broadband Router with SpeedBooster WRT54GS

Wireless | Setup | **Wireless** | Security | Access Restrictions | Applications & Gaming | Administration | Status

Basic Wireless Settings | **Wireless Security** | Wireless MAC Filter | Advanced Wireless Settings

Wireless Security

Security Mode:

Default Transmit Key: 1 2 3 4

WEP Encryption:

Passphrase:

Key 1:

Key 2:

Key 3:

Key 4:

Security Mode: You may choose from Disable, WPA Personal, WPA Enterprise, WPA2 Personal, WPA2 Enterprise, RADIUS, WEP. All devices on your network must use the same security mode in order to communicate. [More...](#)

CISCO SYSTEMS

Step 13. Security Mode – change it to **WEP**

Step 14. The **Default Transmit Key** is always **1**

Step 15. WEP Encryption – **128 bits 26 hex digits**

Step 16. In the passphrase, please type in a random word, for demonstration purposes the word blue is used.

For security reasons, please use a word other than blue - Then click Generate

Step 17. Copy and Paste the **WEP Key** into your **WordPad/Notepad**

Step 18. Click **Save Settings, Continue** and close **Internet Explorer.**

Instructions for PC and Laptop Connections to Router

Windows XP

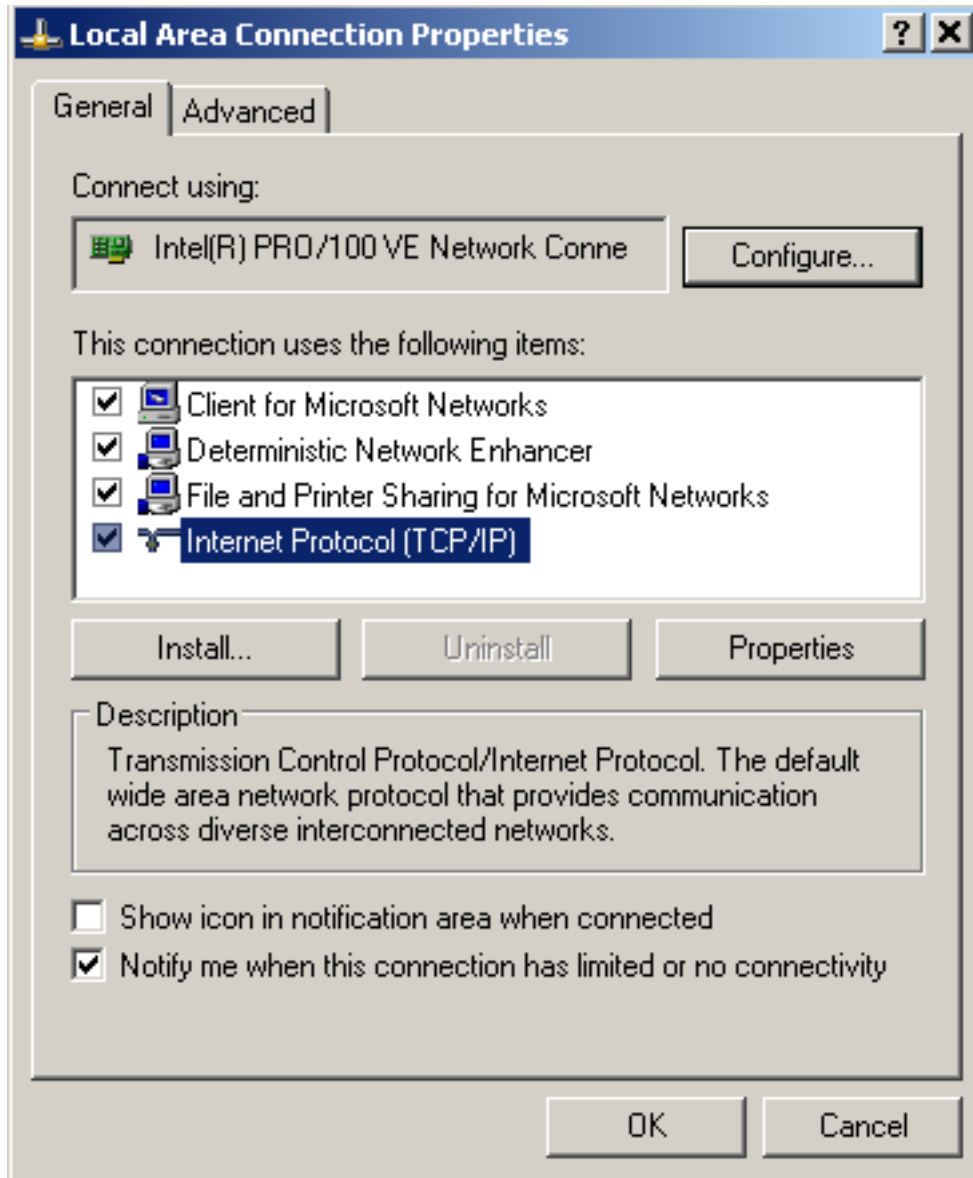
Step 1. Go to Start and then click Control Panel.

Step 2. Double Click on **Network and Internet Connections**

Step 3. Double Click on **Network Connections**

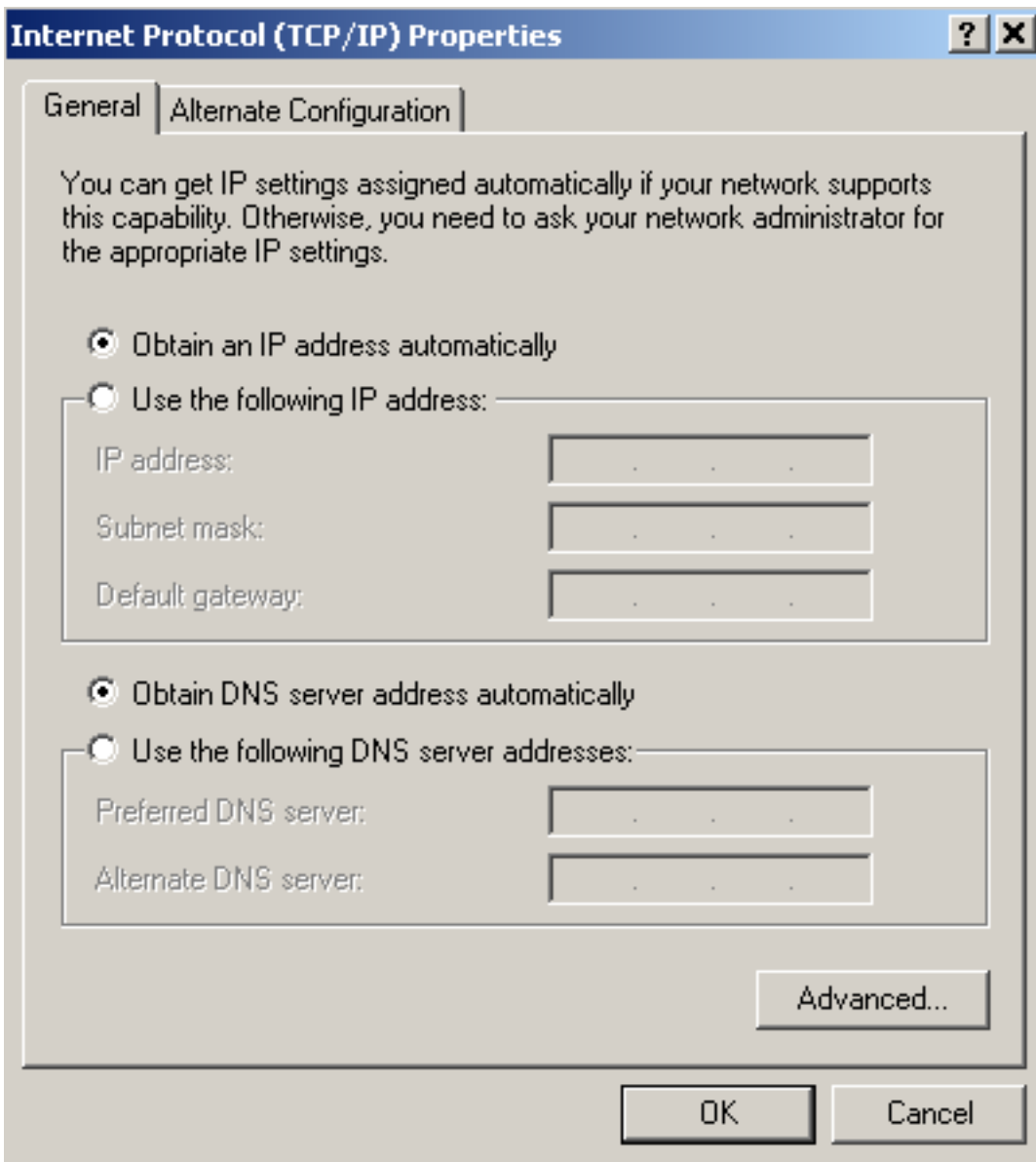
Step 4. Right Click on Local Area Connection/Wireless Connection and Click Properties

Step 5. Select **Internet Protocol(TCP/IP)** and then **Click Properties** button.



Next Page

Step 6. Select to Obtain and IP Address automatically and Obtain DNS server address automatically.



Step 7. Click **OK** all the way back to the Desktop.

Windows Vista

Step 1. Go to Start and then click Control Panel.

Step 2. Go to **Network and Sharing Centre**

Step 3. Go to '**Manage Network Connections**' on left side menu.

Step 4. **Right Click on Local Area Connection/Wireless Connection and Click Properties**

Step 5. Select **Internet Protocol IPV4** and then **Click Properties** button.

Step 6. **Same as Step 6 in Windows XP Instructions.**