

NWE – Bluebox Broadband

This Vista Guide will show you how to set up your PC for your broadband connections

Step 1. On your desktop click on **Start** then click on **Control Panel**



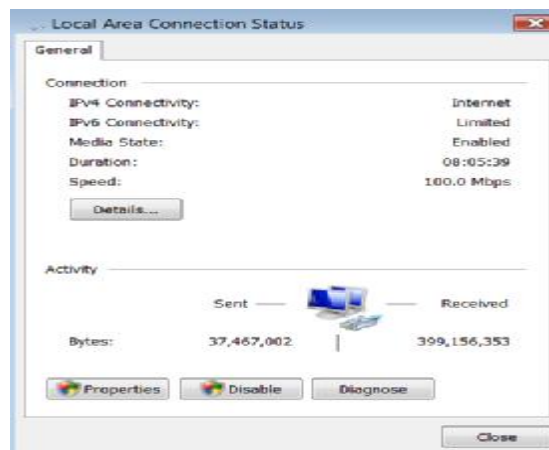
Step 2. **Classic View** Click on **Classic View** on the left side of screen & Click on **Network and Sharing Center**



Step 3. In Local Area Connection Click on **View Status**

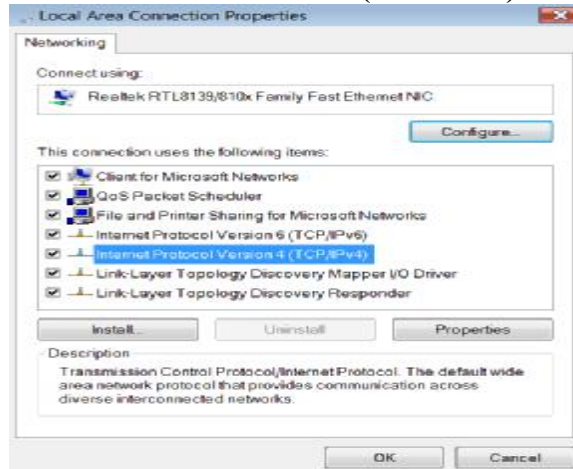


Step 4. In Local Area Connection Click on **Properties & Continue**



NWE – Bluebox Broadband

Step 5. Click on **Internet Protocol Version 4 (TCP/IPv4)** & Click on **Properties**

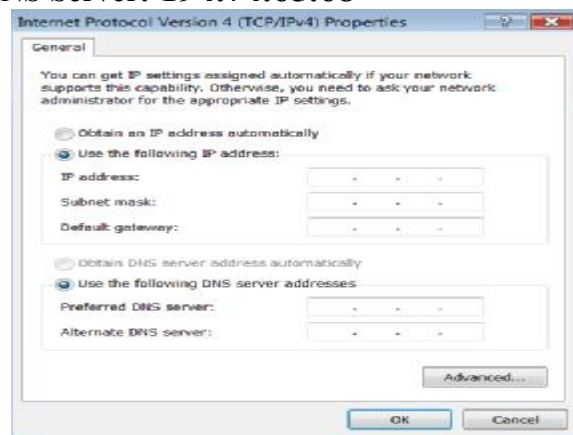


Step 6. Click on **Use the following IP address**

Step 7. Click on **Use the following DNS server addresses.**

Step 8. Input the following Information

- IP Address: 172.20._____._____.
- Subnet Mask: 255.255.255.252
- Default Gateway 172.20._____._____.
- Preferred DNS Server: 194.73.106.133
- Alternate DNS Server: 194.74.65.68



Step 9. Click ok When all Information Entered

Step 10. Click OK then Close

Step 11. Now click on *Internet Explorer* & surf the World Web!!!



If you have any problems with setting up your PC someone will talk you through the process, or email us on support@nwewn.com
Calling from the North 028 71351999: Calling from the South 048 71351999