

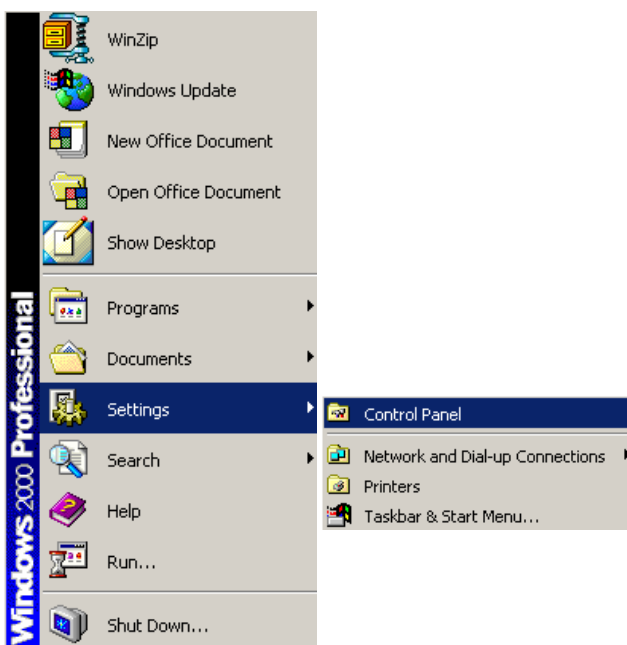
NWE- Blue Box Broadband

Windows 2000: This guide will show you how to set up your PC for your broadband connection

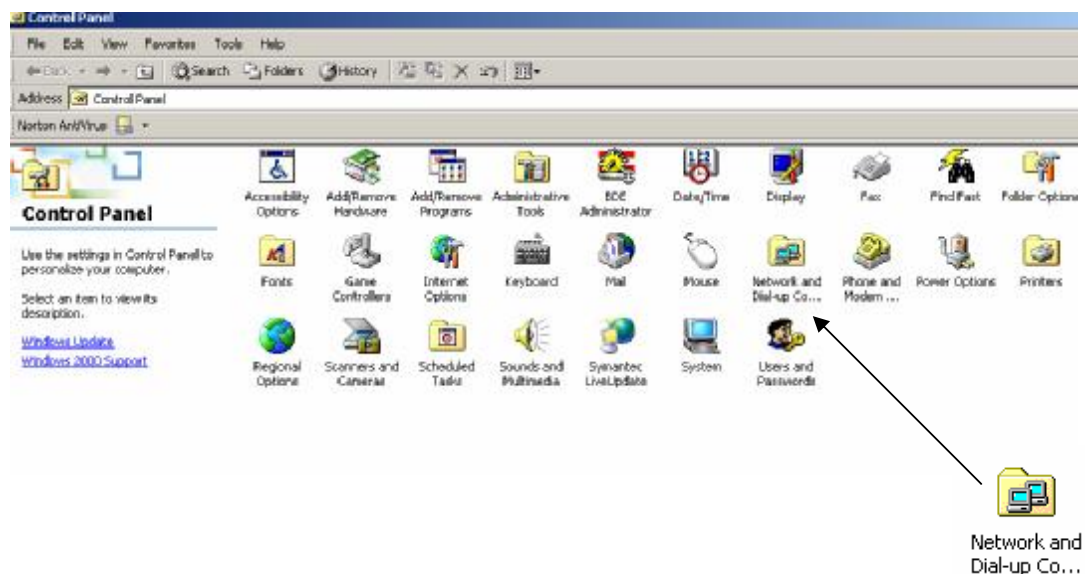
Step 1. On your desktop click on **Start**



Step 2. Click on **Settings** Scroll across and click on **Control Panel**



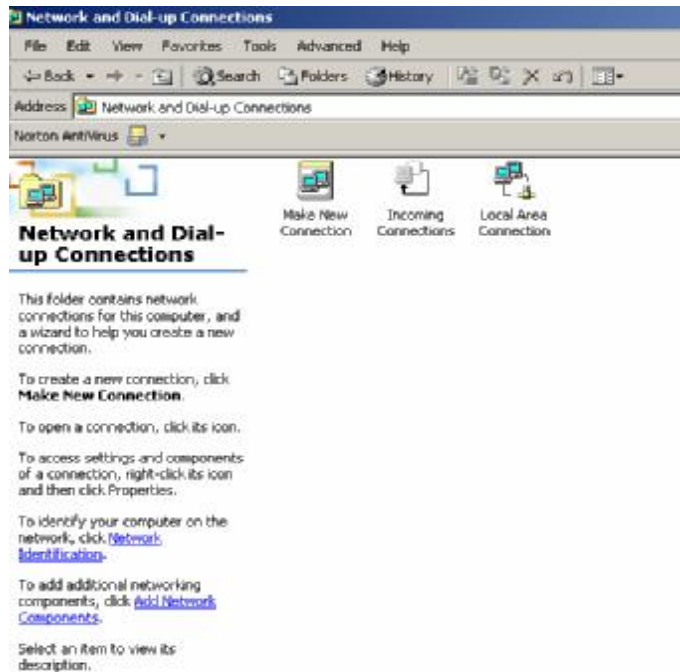
Step 3. Click on **Network & Dial up Connections**



NWE- Blue Box Broadband

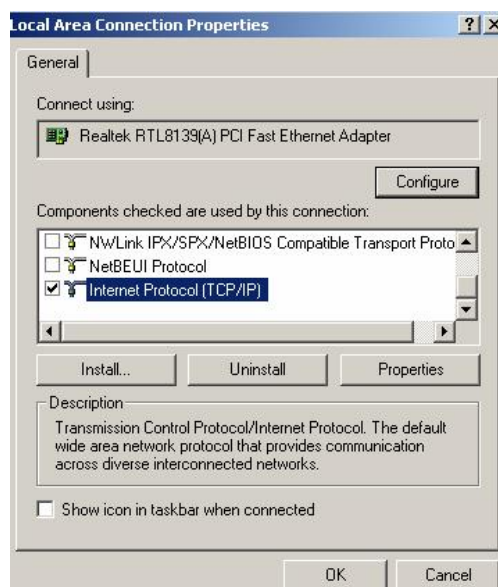
Step 4. Look for **Local Area Connection** and right click
(Ensure that this is enabled if not right click & click on enable)

Step 5. Click on **Properties**



Step 6. Highlight **Internet Protocol (TCP/IP)**

Step 7. Click On **Properties**



NWE- Blue Box Broadband

Step 9. Click on **Use the following IP Address**



Step 10. Input the following Information

- **IP Address:** 172.20. _____ . _____
- **Subnet Mask:** 255.255.255.252
- **Default Gateway:** 172.20. _____ . _____
- **Preferred DNS Server:** 194.73.106.133
- **Alternate DNS Server:** 194.74.65.68

Step 11. Click **OK**

OK

NWE- Blue Box Broadband

Step 12. Click on **OK** again

A rectangular button with a light gray background and the text "OK" in a dark gray font.

Step 13. Now click on **Internet Explorer** and surf the **World Wide Web!!!!**



(If you are having any problems with setting up your PC just give us a ring on 02871 351999 and someone will talk you through the process)