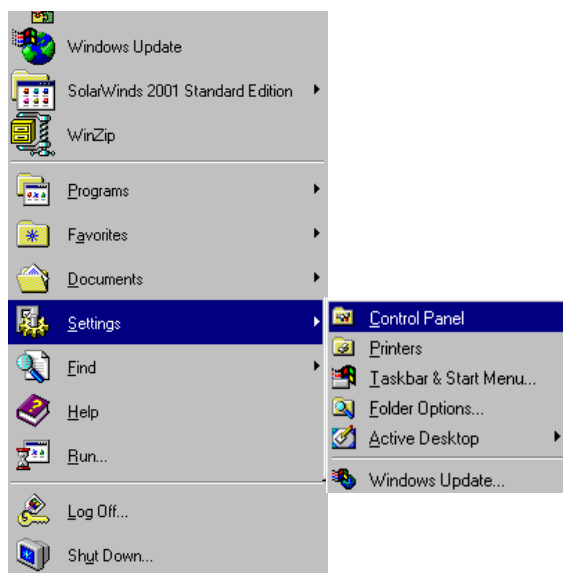


## **Windows 98: This guide will show you how to set up your PC for your broadband connection**

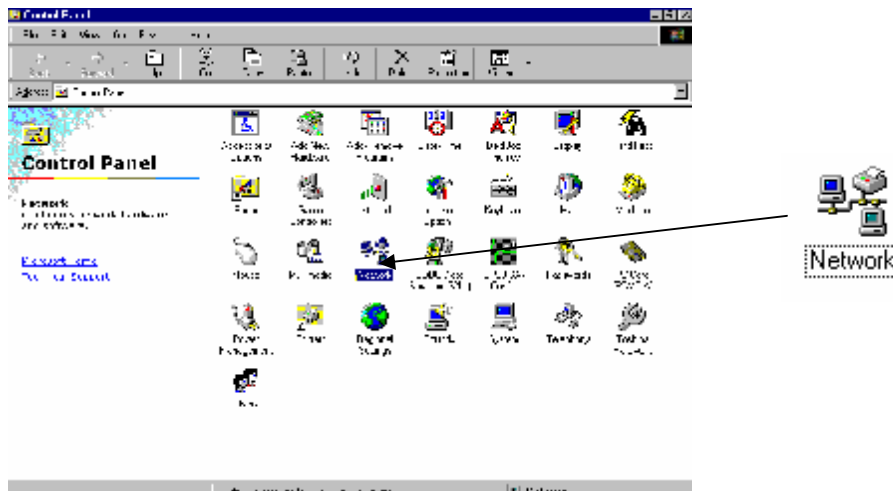
**Step 1.** On your desktop click on **Start**



**Step 2.** Click on **Settings** Scroll across and click on **Control Panel**

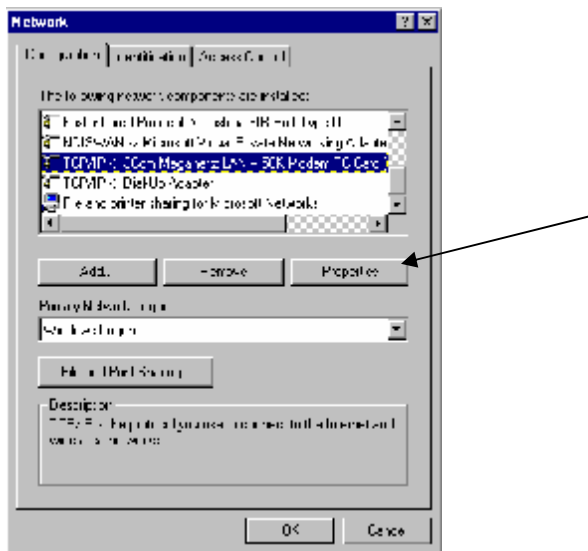


**Step 3.** Click on the icon marked **Network**



**Step 4.** Highlight Internet Protocol (TCP/IP) by clicking on it

**Step 5.** Click **Properties**



**Step 6.** Click on **IP Address** from the menu at the top of the screen

**Step 7.** Next Click on **Use the following IP Address**



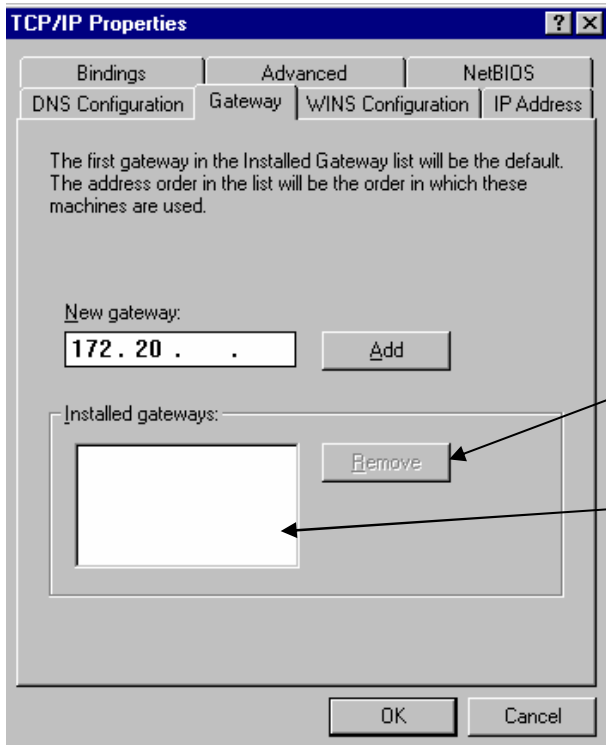
**Step 8.** Input the following information

• **IP Address:** 172.20. \_\_\_\_\_ . \_\_\_\_\_

• **Subnet Mask:** 255.255.255.252

**Step 9.** Next click on **Gateway** from the menu at the top of the screen

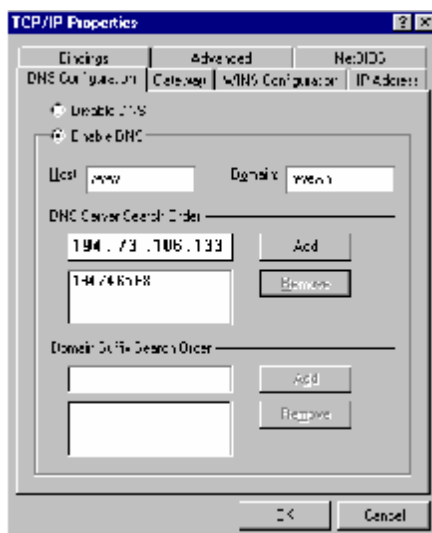
(Ensure no other gateways are present in the box, if so remove them by clicking on them followed by clicking on the remove button)



**Step 8.** Input the following information and click on **Add**

- **New Gateway:** 172.20. \_\_\_\_ . \_\_\_\_

**Step 9.** Next click on **DNS Configuration** from the menu at the top of the screen.

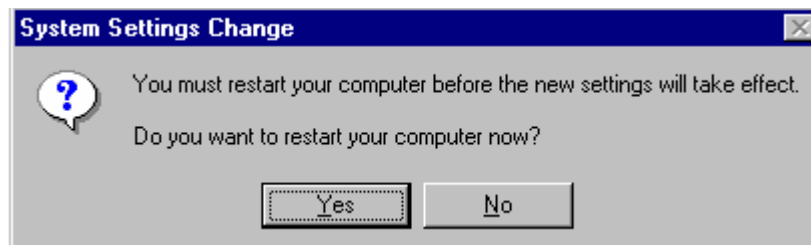


**Step 10.** Input the following Information

- **Preferred DNS Server:** 194.73.106.133
- **Alternate DNS Server:** 194.74.65.68

**Step 11.** Finally Click **OK**

**Step 12.** The screen below will appear, click **Yes** to restart your PC



**Step 13.** After your computer has rebooted click on **Internet Explorer** and surf the **World Wide Web!!!!**



(If you are having any problems with setting up your PC just give us a ring on 02871 351999 and someone will talk you through the process)