

NWE- Blue Box Broadband

Windows XP: This guide will show you how to set up your PC for your broadband connection

Step 1. On your desktop click on Start



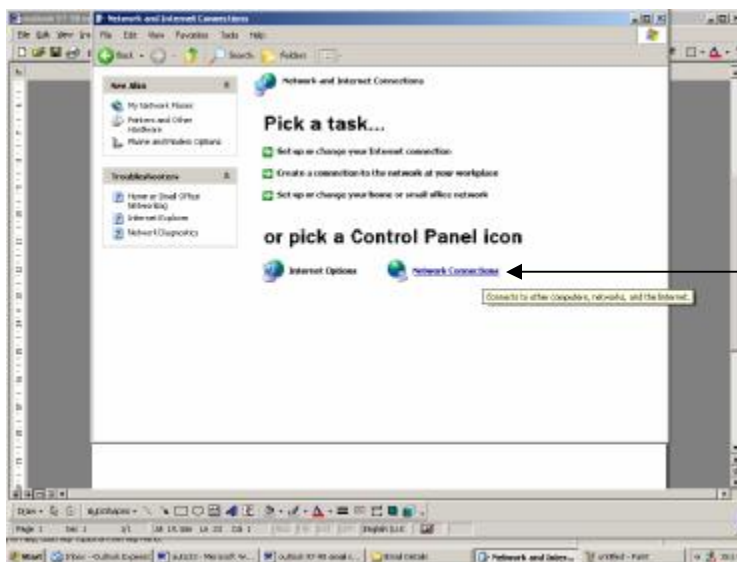
Step 2. Click on Control Panel



Step 3. Click on Network and Internet Connections



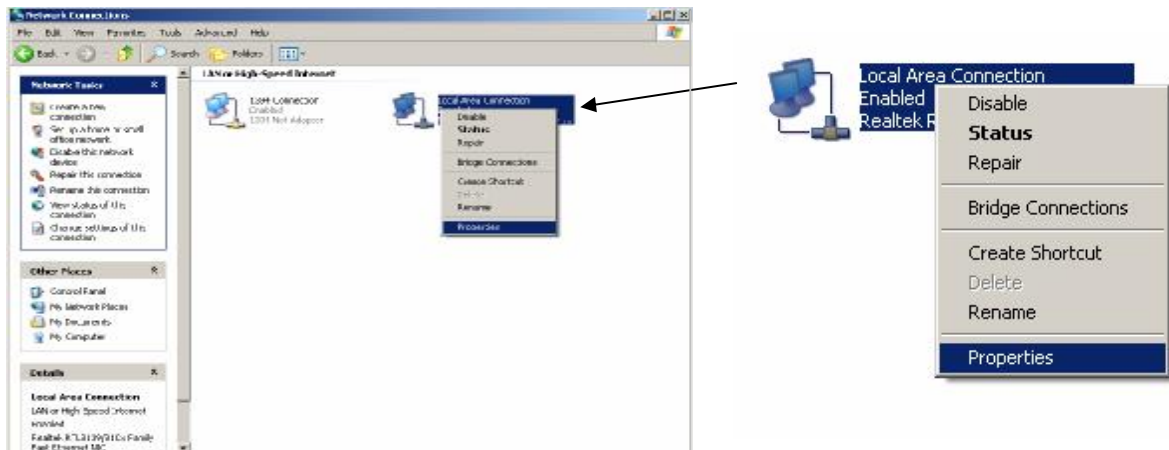
Step 4. Click on Network Connections



NORTH WEST ELECTRONICS

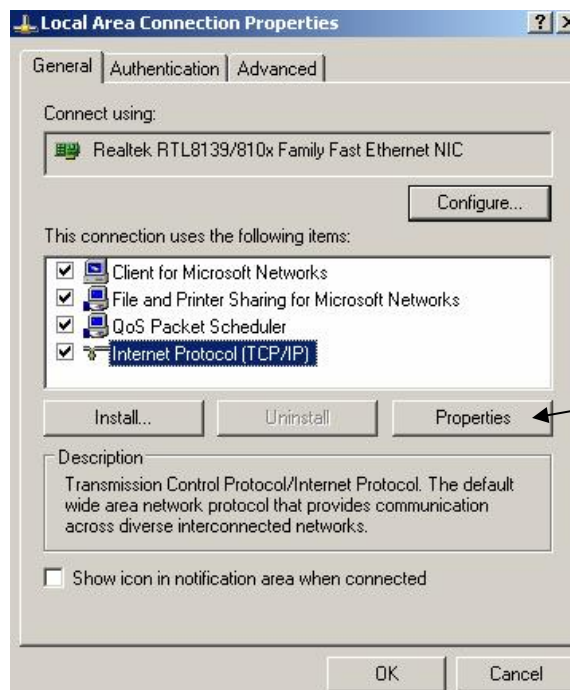
Step 5. Look for **Local Area Connection** and right click
(Ensure that this is enabled if not right click & click on enable)

Step 6. Click on **Properties**



Step 7. Highlight **Internet Protocol (TCP/IP)**

Step 8. Click On **Properties**



NORTH WEST ELECTRONICS

Step 9. Click on **Use the following IP Address**

Step 10. Input the following Information

- **IP Address:** 172.20. ____ . ____
- **Subnet Mask:** 255.255.255.252
- **Default Gateway:** 172.20. ____ . ____
- **Preferred DNS Server:** 194.73.106.133
- **Alternate DNS Server:** 194.74.65.68

The screenshot shows the 'Internet Protocol (TCP/IP) Properties' dialog box with the 'General' tab selected. The dialog box contains the following information:

You can get IP settings assigned automatically if your network supports this capability. Otherwise, you need to ask your network administrator for the appropriate IP settings.

Obtain an IP address automatically

Use the following IP address:

IP address: 172 . 20 . .

Subnet mask: 255 . 255 . 255 . 252

Default gateway: 172 . 20 . .

Obtain DNS server address automatically

Use the following DNS server addresses:

Preferred DNS server: 194 . 73 . 106 . 133

Alternate DNS server: 194 . 74 . 65 . 68

Advanced...

OK Cancel

NORTH WEST ELECTRONICS

Step 11. Click OK



Step 12. Click on Close

Step 13. Now click on Internet Explorer and surf the World Wide Web!!!!



(If you are having any problems with setting up your PC just give us a ring on 02871 351999 and someone will talk you through the process)